

# Poole & Kent Company of Florida

**A Market Leading Specialty General Contractor**  
—with 24 industry safety awards  
in the last 12 years.

Over 60 years of providing clients end-to-end specialty general contracting solutions, including designing, building, and installing highly complex process mechanical, HVAC, plumbing, water/wastewater, and refrigeration systems.



# End-to-End Solutions. Top-to-Bottom Safety.

With over six decades of experience, Poole & Kent is strategically positioned to offer customers best-in-class general process mechanical, HVAC, plumbing, refrigeration, and water/wastewater services.

We're industry specialists and have constructed some of the largest cast-in-place wastewater treatment plant (WWTP) clarifiers in Florida. We have also completed one of the largest deep-bed sand filtration projects in the country.

Whether customers are looking for self-performance capabilities, construction management expertise, design-build services, or LEED-accredited energy professionals, Poole & Kent can customize a solution designed to save time, money, and energy.

## From Preconstruction. To Construction.

Our preconstruction team procures major materials, creates project schedules, identifies optimum construction strategies, and develops innovative value-engineering solutions that help projects start right.

## Superior Self-performance. Every Time.

Poole & Kent's self-performance capabilities are state certified and registered for general contracting as well as multiple trades, including pollutant storage systems, mechanical, plumbing, electrical, and underground utilities/excavation.

## Expert Construction Management. Delivered by True Experts.

We've found that effective communication, rigorous schedule tracking, and budget awareness are key in delivering projects on time and on budget. Our extensive construction management expertise is essential for customers who need to manage multiple tasks while optimizing schedules and budgets.

## Maximizing Opportunities. Minimizing Errors.

Our in-house BIM/3-D CAD capabilities help minimize field errors and reduce conflicts while maximizing prefabrication opportunities. Also, as an EMCOR company, we have access to over 300 full-time 3-D- and BIM-enabled detailers.

## Evaluate Usage. Control Costs.

Poole & Kent's LEED-accredited professionals help give customers greater control over rising energy costs. By evaluating energy usage and identifying cost-saving alternatives, we help create more energy-efficient and cost-effective facility environments. We also have extensive cogeneration system experience and have completed work funded by the U.S. Department of Energy.

## Customized Components. For the Proper Fit.

Our fabrication experts manufacture a varying assortment of customized system components. Shipped to the jobsite when needed, these components help eliminate jobsite clutter and ensure a safer environment. Poole & Kent's goal is the safe installation of components that fit properly for smooth, efficient operation.



## DESIGN-BUILD INSTITUTE OF AMERICA (DBIA) FLORIDA REGION

### 2015 Project of the Year in the Water/Wastewater category

- » For improvements to the existing cogeneration facility at the South District Wastewater Treatment Plant
- » The project was also awarded Construction Association of South Florida (CASF) 2015 Craftsmanship Award for Mechanical Piping.

## 12 YEARS. (2004-2015) 24 SAFETY AWARDS.

### We have a steadfast commitment to safety that has earned the following recognitions:

- » 3 Safety Professional of the Year Awards—given to Safety Director three consecutive years
- » 2 Contractors Association of South Florida Safety Professional of the Year Awards
- » 5 Mechanical Contractors Association of South Florida Excellence in Safety Awards
- » 9 Associated Builder and Contractors STEP (Safety Training and Evaluation Process) Awards
- » 5 Mechanical Contractors Association of America Awards







Meeting the needs of nearly every market sector.

With a comprehensive suite of specialized services.

**Poole & Kent is currently expanding and upgrading the largest sewage plant in Palm Beach County Florida for the City of West Palm Beach. The project includes:**

- » Upgrading 22 structures while minimizing disruption to existing operations
- » Constructing new sludge storage and centrifuge dewatering facilities
- » Constructing thermophilic and mesophilic anaerobic digestion facilities
- » Performing electrical, instrumentation, plumbing, HVAC, and civil-site work
- » Constructing new septage/oils/grease receiving station and new odor control facilities



### Construction Management

We work with customers, owners, engineers, architects, general contractors, and subcontractors to create a working environment that thrives. Poole & Kent is a fully licensed general contractor; we also hold state licenses for mechanical, plumbing, electrical, site utility, and pollutant storage contractor work.

Working with Poole & Kent has a number of advantages:

- » Complete end-to-end construction management and procurement
- » Design-build review services and permitting
- » Project commissioning and start-up
- » Bid-build work being performed “at risk,” unlike many contractors
- » Subcontractor pre-qualification, selection, and management
- » Ability to accurately estimate costs and perform work on time and under budget
- » Ability to self-perform 100% of the work for all trades

### Design-Build

For over 25 years, we have performed cutting-edge design-build construction services focused on taking a partnering approach to project delivery. We recognize the desire for owners to have a single point of contact, price, and schedule guarantees, and accelerated project completion.

Today, Poole & Kent's approach is still largely the same—we listen to customers' needs and provide them with unparalleled design-build solutions. Our approach comes with a number of advantages:

- » Time savings
- » Engineering and construction cost savings
- » Earlier knowledge of cost up front
- » Value engineering up front

- » Constructability review up front
- » Communication and partnering
- » Single point of responsibility
- » Reduced owner's risk
- » Early procurement of major equipment
- » Fewer claims and change orders

### Water/Wastewater Construction

For more than 40 years, Poole & Kent has supplied customers with some of the most innovative water/wastewater solutions available. From constructing new facilities to upgrading and expanding to retrofitting existing facilities, there isn't much we haven't done and seen. Our experience and proficiency in the water/wastewater construction industry are virtually unrivaled. We specialize in the construction of large municipal water and wastewater treatment plants. This includes:

- » Pumping stations
- » Power generation stations
- » High-service pump stations
- » Reverse osmosis and membrane softening facilities

Our expertise also includes:

- » Grit removal
- » Filtration
- » Underground piping systems
- » Oxygen generation
- » Chlorine contact basins
- » Odor control systems
- » Aeration basins, clarifiers
- » Lift stations
- » Biosolids
- » Headworks



## Reverse Osmosis/Nanofiltration

Poole & Kent has completed more large-scale water treatment plants than any other contractor in Florida—including the world's largest membrane process water treatment plant in Boca Raton. The ultra-efficient Boca Raton facility is still enjoying a direct chemical cost savings of nearly \$1 million per year (as reported by the client). Here is a quick overview of our Membrane Softening (MS), Reverse Osmosis (RO), and Nanofiltration (NF) services:

- » Pre-construction design, planning, scheduling, coordination, and procurement
- » End-to-end treatment construction
- » Pump, membrane installations
- » Performance testing
- » Process instrumentation and control
- » Pre-treatment and post-treatment
- » Back-up emergency power

## Filtration

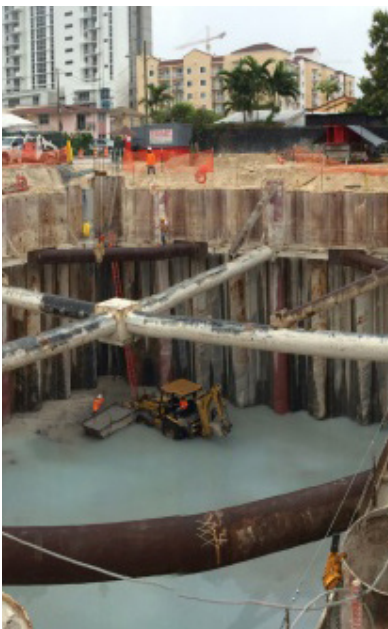
For many water and wastewater treatment plants, providing filtration services is an integral part of the project. We have acquired a vast understanding of the filtration process and are constantly expanding our filtration portfolio and level of expertise. Poole & Kent's unique coordination abilities allow us to manage large, complex projects with across-the-board efficiency and on-time precision. Our filtration services include:

- » Acquiring, coordinating, and installing pump, engine, and electrical controls
- » Scheduling, delivering, and placing large volumes of concrete
- » Constructing complex geometries, including second-placement concrete in complicated shapes

## Pump Stations

We have been applying our experience to mission-critical pump station new construction and retrofits for over 40 years. In fact, we've performed as the prime contractor for many key pump station projects in the South Florida area.

One notable example: Brickell in downtown Miami is one of the County's fastest growing neighborhoods. With the area rapidly developing, MDWASD implemented the Brickell Basin Sewer Improvements which included a new pump station and new sewer lines to accommodate the large scale developments in the area. Poole & Kent constructed the raw sewage master pump station on a confined portion of land between the interstate and residential homes. The project required rigorous planning and detailed sequencing of construction.

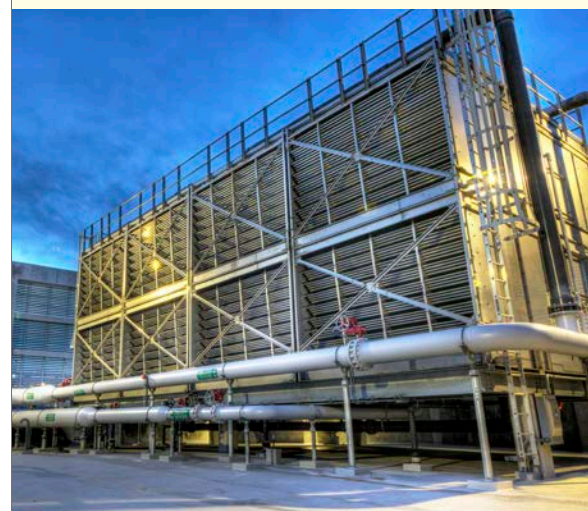


## HVAC/Plumbing

Our HVAC and plumbing services range in scope from working as prime contractor on large-scale chiller plants at Miami International Airport to performing as the mechanical subcontractor on large-scale hospitals, arenas, and high-rises throughout Florida. We self-perform all mechanical work, assuring customers that the construction of their complex mechanical projects will be completed by well-trained, experienced mechanics—and commissioned by veteran superintendents and foremen.

Poole & Kent has built a solid reputation as a highly skilled, professional plumbing contractor that is fully compliant with regulations that meet International Plumbing Codes, Florida Building Code, and local codes. Our licensed technicians and journeyman are experienced in:

- » Domestic water, storm, and sanitary pumping systems
- » Certified installation of medical gas systems
- » Complete mechanical systems for projects such as educational facilities, hotels, high-rise office buildings, research labs, and hospitals
- » Welding and fusion welding for various steel and plastic piping systems
- » Excavation and site work
- » Special installations—water falls, fountains, and de-ionized water systems
- » Natural and LP gas services
- » Hydronic piping and accessories of all kinds







## BIM

With access to over 250 full-time 3-D—and BIM-enabled MEP detailers, and over 300 3-D/BIM projects completed in the last three years, our network's experience speaks for itself. We use BIM technology to deliver heavy-construction projects and provide access to more than 300 EMCOR BIM professionals.

Using BIM and CAD tools and expertise, Poole & Kent collaborates seamlessly with other project team members, sharing vital information and creating (and updating) optimum solutions early in the process—as well as all throughout the process. We help deliver the cost-effective, fast-track construction projects customers need to stay competitive in today's challenging marketplace. Our BIM and 3-D CAD services include:

- » AutoCAD expertise
- » Navisworks expertise
- » Pipe designer software
- » Full compliance with BIM requirements
- » Coordination kick-off meetings
- » Coordination requests
- » FTP sites
- » Supplier/purchase commitments and related resources



## Chiller Plants/District Cooling

Our journeymen and technicians are certified and equipped to perform installation, emergency service, and preventive and contract maintenance and repairs for all commercial and industrial properties.

Proper chillers not only provide critical comfort needs to people and equipment, but also help reduce operation costs, thanks to boosted energy efficiency. Poole & Kent technicians are a go-to resource for comprehensive, high-quality chiller and boiler work. Chillers we work with include:

- » Centrifugal
- » Water/air-cooled screw
- » Scroll air-cooled
- » Reciprocating
- » Absorption
- » Medical

## Aviation Fueling

Since the 1980s, we have installed over 56,000 linear feet of jet-fuel piping at Miami International Airport and acquired a thorough understanding of the aviation fueling industry's demands. We understand unique security protocols and the importance of keeping operations in service. Poole & Kent even has expertise in obtaining dewatering permits from local authorities while remaining aware of environmental concerns on each project. Aviation fueling services and highlights include:

- » Pre-construction design, planning, scheduling, coordination, and procurement
- » In-house drafting and AutoCAD departments
- » Specialty in-jet fuel pipeline systems, coatings and linings, and specialty x-ray welding
- » Fully licensed general contractor
- » Fully licensed mechanical, plumbing, electrical, site utility, and pollutant-storage contractor
- » Full fabricating and welding shop

## In-House Fabrication Services

By offering in-house fabrication services, we're able to control the production of fabricated materials and determine when they're delivered to the project site. This results in reduced lead times for piping spools and fabricated materials delivery. Having in-house fabrication services gives Poole & Kent the ability to adhere to stringent schedule milestones. Our in-house mechanical fabrication capabilities include:

- » ASME B31.1 welding capability
- » X-Ray quality welding
- » Roll grooved systems
- » Soldered systems
- » Sil-Fos systems
- » Threaded systems
- » Electro-polished stainless steel/orbital butt-welded systems
- » PVDF and polypropylene/butt-fusion systems
- » Hanger systems
- » Structural steel systems



### Contact Us

#### Miami-Dade County—Headquarters

1781 N.W. North River Drive

Miami, FL 33125

T 305.325.1930

F 305.324.0522

[www.pkflorida.com](http://www.pkflorida.com)

### Harnessing the Power of a Fortune 500® Leader

EMCOR Group, Inc. (NYSE: EME) is a Fortune 500® leader in mechanical and electrical construction, industrial and energy infrastructure, and building services for a diverse range of businesses.

For 8 consecutive years, EMCOR has been named one of the *Top 5 Most Admired Companies in the Engineering and Construction Industry* by Fortune®.

EMCOR builds, powers, services, and protects the sophisticated and dynamic systems that create facility environments in virtually every sector of the economy for many of the world's most successful organizations. By planning, installing, operating, and maintaining a wide range of facilities and systems, 31,000+ employees at 170+ locations help clients increase productivity and optimize their businesses.

[www.emcorgroup.com](http://www.emcorgroup.com)

### Safety Is Job #1.

#### Safety that Beats the National Average

EMCOR's safety performance is far better than the Bureau of Labor Statistics industry averages, with a rate of injury that is consistently 60%–75% lower than our competitors.

(Source: Bureau of Labor Statistics Industry Average for Specialty Contractors NAICS 238, 2004-2012)

### Serving the Communities Where We Live, Work, and Play.

#### Taking KidSafety to the Street™

As part of EMCOR's Taking KidSafety to the Street Program, Poole & Kent is proud to serve the community through its work with the National Center for Missing & Exploited Children.® By prominently displaying posters of missing children on our company and personal vehicles, and by responding quickly when a child is reported missing within facilities where we work, we help recover missing children and promote child safety.

